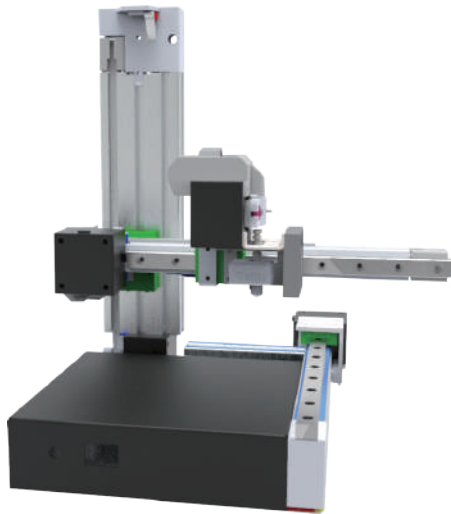


CETUS MKIII

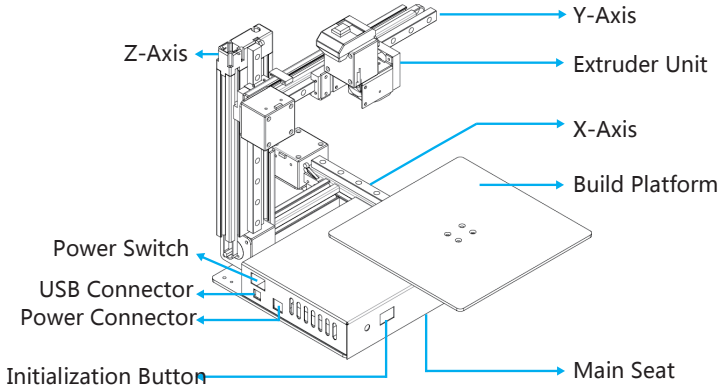
Quick Start Guide



ENGLISH-----	P1
TRADITIONAL CHINESE-----	P9
GERMAN-----	P17
JAPANESE-----	P25



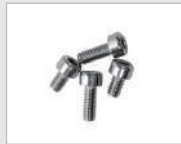
This manual provides you the quick installation for the 3D printer including hardware and software. For more information, please refer to support.tiertime.com



Extruder Unit



Build Plate



Spare Screws



PLA Filament Sample
(50g x 3)



USB Cable



Power Cable



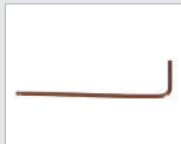
Power Adapter



Plier



Scraper



Hex Key



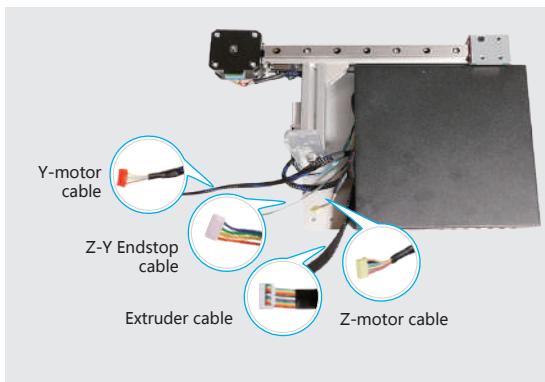
Nozzle Wrench



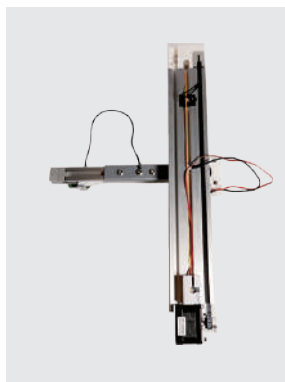
Nozzles
(0.2/0.4/0.6mm)



Spool Holder Kits

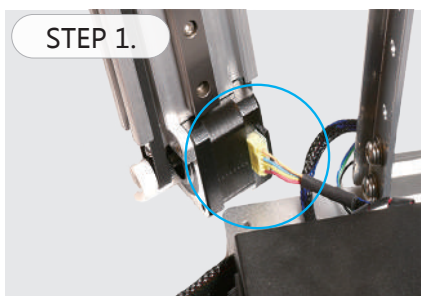


X-axis and machine base

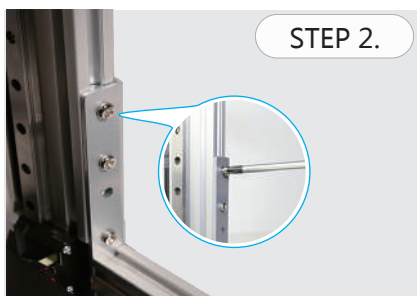


Y and Z-axes assembly

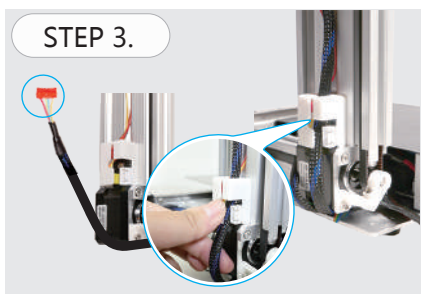
>> INSTALLATION GUIDE



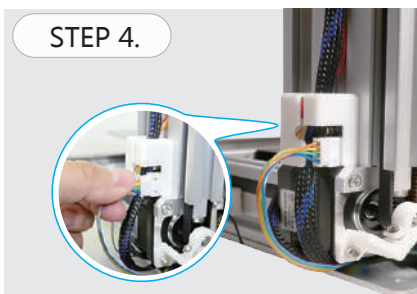
Hold the Z-axis vertically by hand and plug in the Z motor cable.



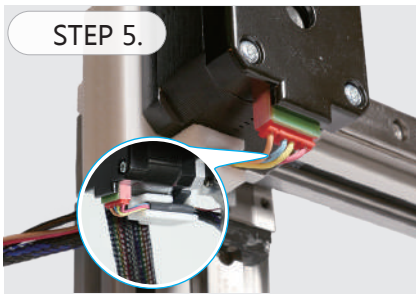
Assemble the Z axis on the base by use the 3 large screws included.



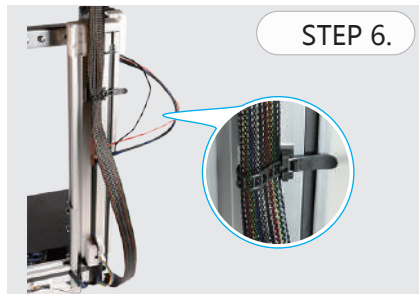
Push the Y-motor cable(Red) into the white cable holder.



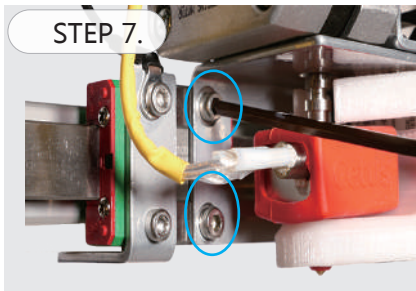
Connect the Y-Z endstop cable to the connector inside the cable holder.



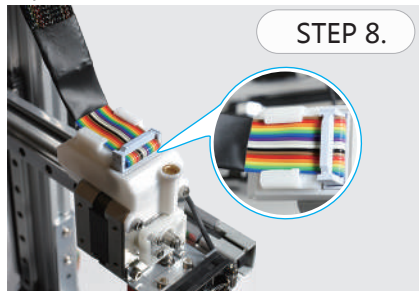
Connect Y-motor cable to Y-motor. Y-motor cable insert to the cable holder.



Put the extruder cable underneath the Z-motor and hold to the Z-axis by the cable belt. Y-motor cable and Y-Z endstop cable can be hold together by zip tie.



Install the extruder head by using the 2 hex nuts on the linear rail slider.



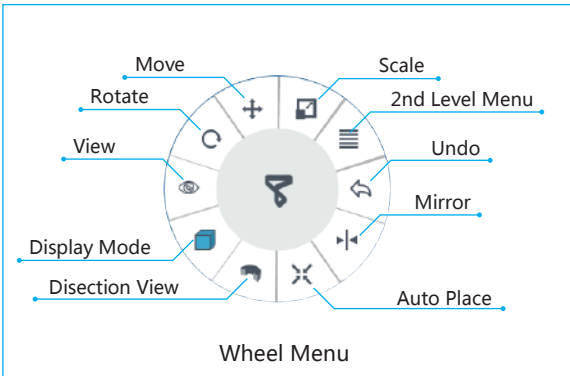
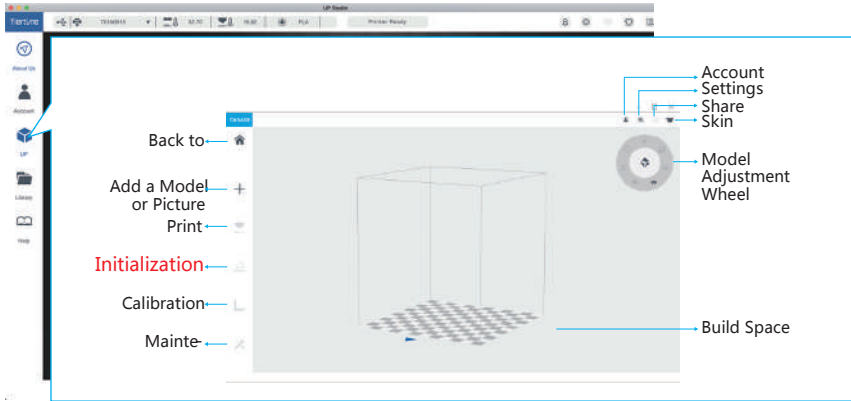
Plug in the extruder cable securely. Fit the cable into the protective slot.



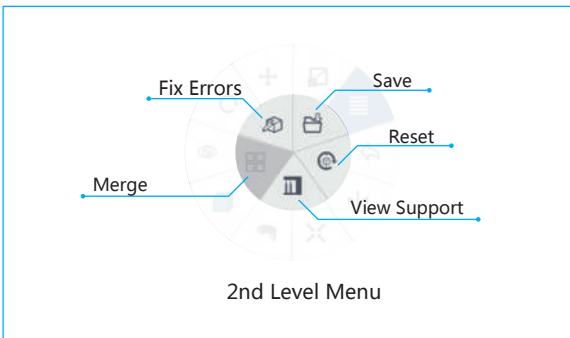
Assemble the filament spool holder, red arrows indicate where L bracket is used.

>> SETUP PRINTER

1. Download and Install Cetus3D software: www.cetus3d.com/download
2. Start to print by clicking the print icon on the software main menu.

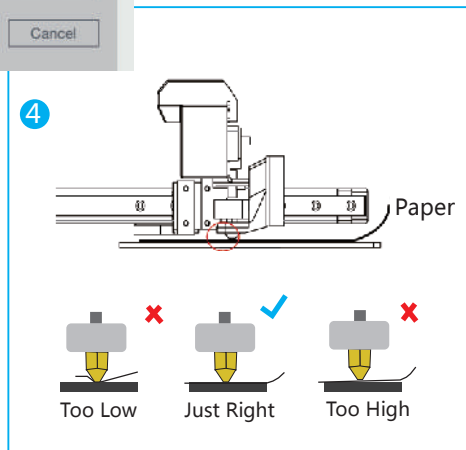
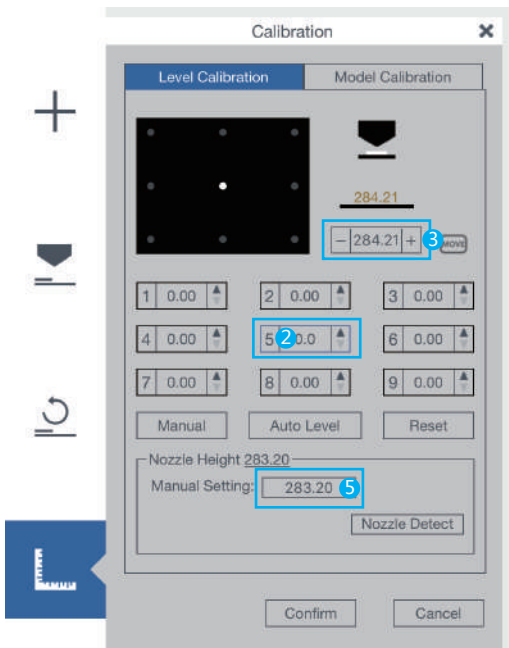


Note: Initialization is required every time when the machine is powered on, this is in order to determine the correct position.



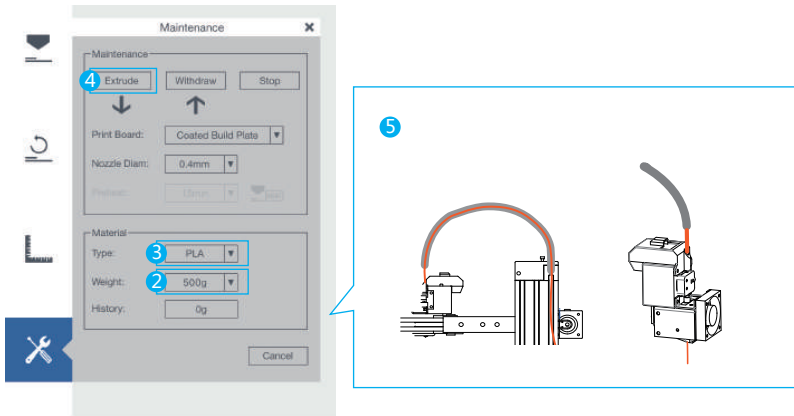
>> ADJUST THE NOZZLE HEIGHT

1. Go to "Calibration" .
2. Press button 5 to move the Nozzle to the middle of the build platform.
3. Use the + button to lower the Nozzle to close proximity of platform.
4. Put a paper in between the Nozzle and Platform, lower the nozzle and feel the drag between paper and nozzle. At the correct height, the paper should be able to move freely but user should able to feel a small drag from the nozzle.
5. Note the current nozzle height and deduct the value of it by 0.5mm and press "set" button to save the value as nozzle height (for printer with raft).



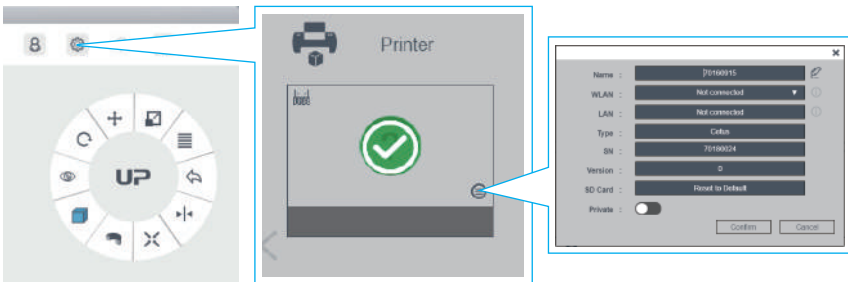
>> LOAD FILAMENT

1. Go to "Maintenance" .
2. Select the Material from the dropdown material list.
3. Input the filament weight.
4. Click "Extrude" to heat up the nozzle.when the filament melting temperature is reached,the printer will buzz and begin to extrude.
5. Install the guiding tube,insert the filament into guiding tube.When the printer buzz, insert the filament into the extruder unit gently.



>> SETUP WIFI

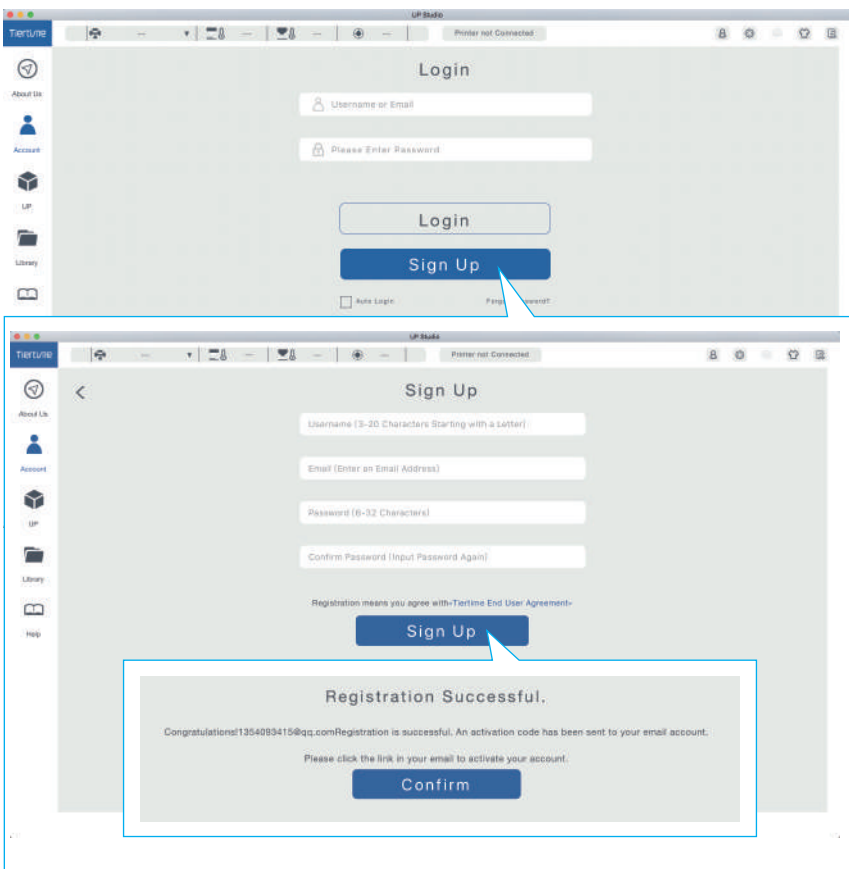
1. Click the Setting icon at the top right corner.
2. Select Printer.
3. Click the Printer Detail button.
4. Click the Network dropdown menu to select an available network.
5. Input the password for the Wi-Fi network.



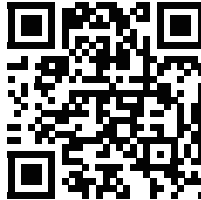
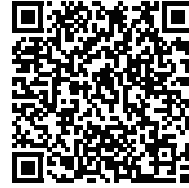
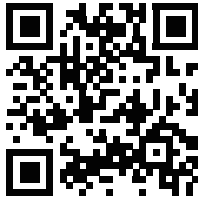
Note: The computer and printer must be in the same WLAN (same SSID) before connecting.

>> ACTIVATE MACHINE

1. Connect your printer to computer. In the software, go to account section and login, click "Activate" to activate the machine.
2. We recommend you to register an account and active your printer to get fully access to functions of 3D printer.
3. Select Account on the software main menu.
4. For a new user, click "Sign Up" to create a user account.
5. Register your account including Username,Email and Password,Go to the registered email and click the activation link.



SOCIAL MEDIA



COMPLIANCE

FC CE RoHS

SUPPORT

Email: Support@cetus3d.com

Forum: www.cetus3d.com/forums

Facebook Group: Cetus3D Users

MANUFACTURER

Wuxi Tiertime Technology Co., Ltd

35-301 Changjiang South Road (by No.1 Road, Inner Ring),

Wuxi New District, Jiangsu 214142, P. R. China

Tel: +86 (01) 10 64338663

Email: hello@cetus3d.com

